



Kraft-Einsätze

Impact sockets



DIN 3121 – ISO 1174

KRAFT Steckschlüssel-Einsätze und Verbindungsteile

Fertigung nach DIN3129/ISO2725 und bei Vierkant-
aufnahmen nach DIN3121/ISO 1174, für Dreh- und
Schlagschrauber; aus Super-Chrom-Vanadium-Stahl,
phosphatiert. Zum Sichern der Verbindung verwenden
Sie bitte die entsprechenden Sicherungsringe- und Stifte.

Kraft Steckschlüssel-Einsätze

● 6,3 (1/4")
Sicherungsstift: I
Sicherungsring: I

Impact sockets

● 6,3 (1/4")
Locking pin: I
Locking ring: I

Artikel-Nr. Order-No.	Ident-Nr. Ident-No	mm	D 1	D 2	L	⚖	📄
20000	55484	4	7,6	13	23	14	5
20000	55494	5	8,8	13	23	14	5
20000	55504	6	10,0	13	23	15	5
20000	55514	7	11,3	13	23	15	5
20000	55524	8	12,5	13	23	15	5
20000	55534	9	13,8	13	23	17	5
20000	55544	10	15,0	13	23	17	5
20000	55554	11	16,3	13	23	20	5
20000	55564	12	17,0	13	23	24	5
20000	55574	13	18,8	13	23	27	5
20000	55584	14	20,0	13	23	28	5

Kraft Steckschlüssel-Einsätze

● 10 (3/8")
Sicherungsstift: 7-12mm = 2A, 13-19mm = 3
Sicherungsring: 7-12mm = 2A, 13-19mm = 3

Impact sockets

● 10 (3/8")
Locking pin: 7-12mm = 2A, 13-19mm = 3
Locking ring: 7-12mm = 2A, 13-19mm = 3

Artikel-Nr. Order-No.	Ident-Nr. Ident-No	mm	D 1	D 2	L	⚖	📄
21000	55709	7	12,5	19	30	35	5
21000	55710	8	14,0	19	30	42	5
21000	55714	9	15,0	19	30	41	5
21000	55724	10	16,0	19	30	42	5
21000	55734	11	17,5	19	30	44	5
21000	55744	12	19,0	19	30	37	5
21000	55754	13	20,0	22	30	56	5
21000	55764	14	21,0	22	30	66	5
21000	55774	15	22,0	22	30	52	5
21000	55784	16	24,0	22	30	59	5
21000	55794	17	25,0	22	30	72	5
21000	55804	18	26,0	22	30	62	5
21000	55814	19	27,5	22	30	84	5

Kraft Steckschlüssel-Einsätze

● 12,5 (1/2")
Sicherungsstift: 8-14mm = 3, 15-30mm = 3A
Sicherungsring: 8-14mm = 3, 15-30mm = 3A

Impact sockets

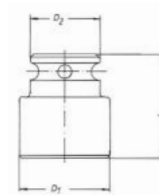
● 12,5 (1/2")
Locking pin: 8-14mm = 3, 15-30mm = 3A
Locking ring: 8-14mm = 3, 15-30mm = 3A

Artikel-Nr. Order-No.	Ident-Nr. Ident-No	mm	D 1	D 2	L	⚖	📄
22000	56044	8	14,5	25	38	85	5
22000	56034	9	16,0	25	38	85	5
22000	56054	10	17,0	25	38	87	5
22000	56064	11	18,5	25	38	85	5
22000	56074	12	19,5	25	38	85	5
22000	56084	13	21,0	25	38	90	5
22000	56094	14	22,0	25	38	89	5
22000	56104	15	23,5	30	38	131	5
22000	56114	16	25,0	30	38	138	5
22000	56124	17	26,0	30	38	134	5
22000	56134	18	27,0	30	38	135	5
22000	56144	19	28,0	30	38	130	5
22000	56154	20	30,0	30	38	124	5
22000	56164	21	31,0	30	38	118	5
22000	56174	22	32,5	30	38	134	5
22000	56194	24	35,0	30	45	178	5
22000	56224	27	39,0	30	50	220	5
22000	56234	30	42,0	30	50	236	5
22000	56244	32	44,0	30	50	216	5
22000	56254	36	48,0	30	50	280	5

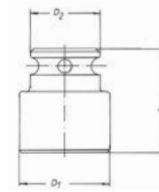
IMPACT sockets and accessory parts

manufactured as per DIN3129/ISO2725, square drive
adaptor as per DIN3121/ISO 1174 , for use on air or
electric power machines, made of super chrome vana-
dium steel, phosphatized. For working safety, please, use
locking pins and rings.

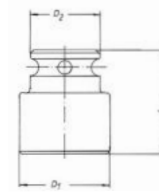
20000



21000



22000



Kraft-Einsätze Impact sockets



DIN 3121 – ISO 1174

Kraft Steckschlüssel-Einsätze

● 20 (3/4")

Sicherungsstift: 5

Sicherungsring: 5

Impact sockets

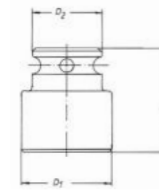
● 20 (3/4")

Locking pin: 5

Locking ring: 5

25000

Artikel-Nr. Order-No.	Ident-Nr. Ident-No	mm	D ₁	D ₂	L		
25000	57602	16	27	44	50	366	I
25000	57604	17	31	44	50	366	I
25000	57609	18	32	44	50	380	I
25000	57614	19	33	44	50	378	I
25000	57624	20	34	44	50	384	I
25000	57634	21	35	44	50	381	I
25000	57644	22	37	44	50	389	I
25000	57654	23	38	44	50	382	I
25000	57664	24	39	44	50	382	I
25000	57674	25	40	44	50	382	I
25000	57694	27	43	44	54	405	I
25000	57724	30	47	44	54	426	I
25000	57734	32	49	44	56	474	I
25000	57714	33	51	44	56	496	I
25000	57744	34	52	44	56	499	I
25000	57754	35	53	44	56	484	I
25000	57764	36	54	44	56	521	I
25000	57784	38	57	44	58	564	I
25000	57794	39	58	44	58	602	I
25000	57804	41	60	44	58	618	I
25000	57805	42	62	44	58	672	I
25000	57814	46	67	44	63	796	I
25000	57815	50	71	54	72	1115	I
25000	57824	55	77	54	74	1235	I
25000	40122000	60	84	54	75	1490	I



Kraft Steckschlüssel-Einsätze

● 25 (1")

Sicherungsstift: 6

Sicherungsring: 6

Impact sockets

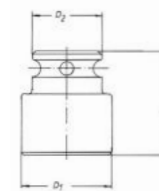
● 25 (1")

Locking pin: 6

Locking ring: 6

26000

Artikel-Nr. Order-No.	Ident-Nr. Ident-No	mm	D ₁	D ₂	L		
26000	57935	19	35,5	54	58	629	I
26000	57944	21	37,5	54	58	640	I
26000	57954	22	40,0	54	58	661	I
26000	57964	24	42,0	54	58	592	I
26000	57974	27	46,0	54	58	682	I
26000	57984	28	47,0	54	58	666	I
26000	57994	29	48,0	54	60	595	I
26000	58004	30	50,0	54	60	714	I
26000	58014	32	52,0	54	60	685	I
26000	58015	33	53,0	54	60	676	I
26000	58019	34	55,0	54	62	726	I
26000	58044	36	56,0	54	65	756	I
26000	58049	38	59,0	54	65	815	I
26000	58064	39	60,0	54	67	795	I
26000	58074	41	63,0	54	67	846	I
26000	58094	46	69,5	54	74	1133	I
26000	58104	50	74,0	54	80	1312	I
26000	58114	55	81,0	54	84	1479	I
26000	58124	60	87,0	54	87	1727	I
26000	58134	65	93,0	54	90	1981	I
26000	58144	70	100,0	54	96	2271	I
26000	58154	75	104,0	86	98	3622	I
26000	58164	80	109,0	86	100	3539	I
26000	58175	85	115,0	86	100	4440	I
26000	58155	90	119,0	86	105	4845	I
26000	58156	95	130,0	86	105	5629	I
26000	58157	100	136,0	95	105	6340	I



Kraft-Einsätze Impact sockets



DIN 3121 – ISO 1174

Kraft Steckschlüssel-Einsätze

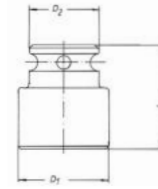
● 40 (1 1/2")
Sicherungsstift: 7
Sicherungsring: 7

Impact sockets

● 40 (1 1/2")
Locking pin: 7
Locking ring: 7

27000

Artikel-Nr. Order-No.	Ident-Nr. Ident-No	mm	D 1	D 2	L		
27000	58299	34	63	86	78	2130	I
27000	58304	36	63	86	78	2150	I
27000	58309	38	66	86	78	2280	I
27000	58324	41	70	86	80	2330	I
27000	58344	46	76	86	80	2360	I
27000	58354	50	81	86	82	2560	I
27000	58374	55	88	86	90	2600	I
27000	58394	60	94	86	90	2780	I
27000	58404	65	100	86	100	3364	I
27000	58414	70	107	86	105	3915	I
27000	58424	75	113	86	110	4438	I
27000	58434	80	119	86	116	5050	I
27000	58444	85	125	86	117	5400	I
27000	58454	90	132	86	120	6400	I
27000	58464	95	142	86	124	7400	I
27000	58474	100	149	86	127	8220	I
27000	58484	105	155	86	133	9300	I
27000	58494	110	162	86	133	8300	I
27000	58504	115	169	86	136	11000	I
27000	58514	120	175	86	139	12000	I



Kraft Steckschlüssel-Einsätze

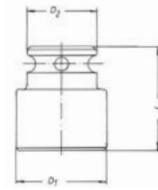
● 63 (2 1/2")
Sicherungsstift: 8
Sicherungsring: 8

Impact sockets

● 63 (2 1/2")
Locking pin: 8
Locking ring: 8

29000

Artikel-Nr. Order-No.	Ident-Nr. Ident-No	mm	D 1	D 2	L		
29000	58914	75	119	89	133	6880	I
29000	58924	80	125	95	133	7280	I
29000	58934	85	130	101	134	7900	I
29000	58944	90	136	106	134	8100	I
29000	58954	95	143	113	137	9500	I
29000	58964	100	150	119	140	9700	I
29000	58974	105	156	124	147	10700	I
29000	58984	110	162	130	147	11200	I
29000	58994	115	169	136	150	11900	I
29000	59004	120	175	142	155	12800	I
29000	59014	125	180	148	160	13900	I
29000	59024	130	188	154	160	15000	I
29000	59034	135	193	160	165	16500	I
29000	59044	140	200	165	168	18100	I
29000	59054	145	207	170	170	19700	I
29000	59064	150	212	176	175	21500	I



Kraft Steckschlüssel-Einsätze

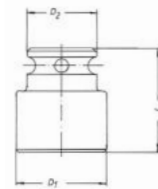
● 90 (3 1/2")
Sicherungsstift: 11, 12
Sicherungsring: 9, 9A

Impact sockets

● 90 (3 1/2")
Locking pin: 11, 12
Locking ring: 9, 9A

29900

Artikel-Nr. Order-No.	Ident-Nr. Ident-No	mm	D 1	D 2	L		
29900	23154	100	169	180	180	15680	I
29900	23164	105	176	180	180	16880	I
29900	23174	110	183	180	180	21440	I
29900	23184	115	190	180	205	24080	I
29900	23194	120	197	180	205	25840	I
29900	23204	125	203	180	210	28480	I
29900	23214	130	210	180	210	30400	I
29900	23224	135	217	180	215	33680	I
29900	23234	140	224	180	220	37120	I
29900	23244	145	231	180	220	39520	I
29900	23254	150	237	180	225	42960	I
29900	23264	155	244	200	225	45520	I
29900	23274	160	251	200	230	49760	I
29900	23284	165	258	200	230	52560	I
29900	23294	170	265	200	235	57560	I
29900	23304	175	271	200	235	59520	I
29900	23314	180	278	200	240	64800	I



Kraft-Einsätze Impact sockets



DIN 3121 – ISO 1174

Kraft Steckschlüssel-Einsätze, lange Ausführung

● 12,5 (1/2")

Sicherungsstift/-ring: 8-14 mm = 3

Sicherungsstift/-ring: 15-36 mm = 3A

Impact sockets, long version *

● 12,5 (1/2")

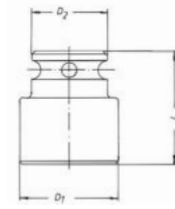
Locking pin/ring: 8-14 mm = 3

Locking pin/ring: 15-36 mm = 3A

Artikel-Nr. Order-No.	Ident-Nr. Ident-No	mm	D 1	D 2	L	⚖	📏
22000 L	56256	8	15	25	78	137	5
22000 L	56257	10	17,5	25	78	140	5
22000 L	56258	13	21	25	78	160	5
22000 L	56259	14	22,5	25	78	167	5
22000 L	56255	15	23,5	30	78	226	5
22000 L	56260	16	25	30	78	239	5
22000 L	56261	17	26	30	78	236	5
22000 L	56262	18	27,5	30	78	252	5
22000 L	56263	19	28,5	30	78	251	5
22000 L	56276	21	31	30	78	273	5
22000 L	56264	22	32	30	78	289	5
22000 L	56265	24	35	30	78	325	5
22000 L	56266	27	38,5	30	78	366	5
22000 L	56267	30	42,5	30	78	410	5
22000 L	56268	32	44	30	78	402	5
22000 L	56269	36	48	30	78	470	5

Dünnwandige Ausführung siehe Art.-Nr. 22100 L

Thin wall version see order-no. 22100 L



22000 L



Kraft Steckschlüssel-Einsätze, lange Ausführung

● 20 (3/4")

Sicherungsstift: 5

Sicherungsring: 5

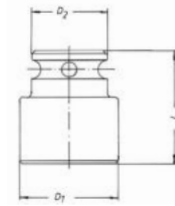
Impact sockets, long version

● 20 (3/4")

Locking pin: 5

Locking ring: 5

Artikel-Nr. Order-No.	Ident-Nr. Ident-No	mm	D 1	D 2	L	⚖	📏
25000 L	57826	16	27	44	95	525	I
25000 L	57827	17	31	44	95	607	I
25000 L	57828	18	32	44	95	544	I
25000 L	57829	19	33	44	95	571	I
25000 L	57845	21	35	44	95	578	I
25000 L	57830	22	37	44	95	626	I
25000 L	57831	24	39	44	95	634	I
25000 L	57832	27	43	44	95	710	I
25000 L	57833	30	47	44	95	773	I
25000 L	57835	32	49	44	95	828	I
25000 L	57846	33	51	44	95	887	I
25000 L	57847	34	52	44	95	810	I
25000 L	57836	36	54	44	95	975	I
25000 L	57837	38	57	44	95	946	I
25000 L	57834	39	58	44	95	1041	I
25000 L	57838	41	60	44	95	996	I
25000 L	57839	46	67	44	95	1197	I
25000 L	57840	50	71	54	95	1420	I



25000 L



Kraft Steckschlüssel-Einsätze, lange Ausführung

● 25 (1")

Sicherungsstift: 6

Sicherungsring: 6

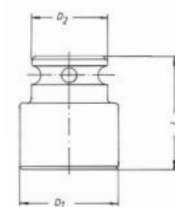
Impact sockets, long version

● 25 (1")

Locking pin: 6

Locking ring: 6

Artikel-Nr. Order-No.	Ident-Nr. Ident-No	mm	D 1	D 2	L	⚖	📏
26000 L	58175	19	35,5	54	100	940	I
26000 L	58176	22	40	54	100	953	I
26000 L	58173	23	41	54	100	932	I
26000 L	58177	24	42	54	100	985	I
26000 L	58178	27	46	54	100	985	I
26000 L	58179	30	50	54	100	1056	I
26000 L	58180	32	52	54	100	1065	I
26000 L	58195	33	53	54	100	1106	I
26000 L	58181	34	55	54	100	1117	I
26000 L	58182	36	57	54	100	1096	I
26000 L	58183	38	59,5	54	100	1204	I
26000 L	58193	39	60	54	100	1240	I
26000 L	58184	41	64	54	100	1273	I
26000 L	58185	46	69,5	54	100	1444	I
26000 L	58186	50	75	54	100	1632	I
26000 L	58187	55	81	54	100	1699	I
26000 L	58188	60	87	54	105	2747	I
26000 L	58189	65	93	54	125	3244	I
26000 L	58190	70	99	54	125	3623	I
26000 L	58191	75	104	86	135	3680	I
26000 L	58192	80	109	86	135	5592	I



26000 L





DIN 3121 – ISO 1174

Kraft Steckschlüssel-Einsätze, lange Ausführung

● 40 (1 1/2")

Sicherungsstift: 41-80mm=7

Sicherungsring: 85-120mm=8

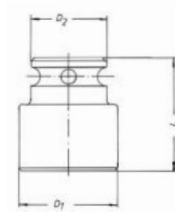
Impact sockets, long version

● 40 (1 1/2")

Locking pin: 41-80mm=7

Locking ring: 85-120mm=8

Artikel-Nr. Order-No.	Ident-Nr. Ident-No	mm	D 1	D 2	L	g	g
27000 L	58600	41	70	86	120	2900	I
27000 L	58601	46	76,5	86	133	3090	I
27000 L	58602	50	81,5	86	146	3780	I
27000 L	58603	55	88	86	146	4250	I
27000 L	58604	60	94	86	146	4400	I
27000 L	58605	65	100,5	86	153	5100	I
27000 L	58606	70	107	86	153	5400	I
27000 L	58607	75	113	86	165	5500	I
27000 L	58608	80	119,5	86	172	6600	I
27000 L	58609	85	126	127	172	7300	I
27000 L	58610	90	132	127	178	8000	I
27000 L	58611	95	144	127	184	12000	I
27000 L	58612	100	151	127	190	10700	I
27000 L	58613	105	156,5	127	197	12000	I
27000 L	58614	110	163	127	203	17000	I
27000 L	58615	115	169	127	203	13000	I
27000 L	58616	120	176	127	213	15000	I



27000 L



Kraft Steckschlüssel-Einsätze, lange Ausführung
dünnwandig

● 12,5 (1/2")

Sicherungsstift: 17-21 mm=3

Sicherungsring: 22 mm=31

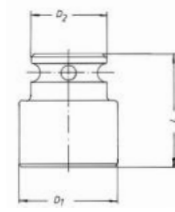
Impact sockets, long version
thin wall

● 12,5 (1/2")

Locking pin: 17-21 mm=3

Locking ring: 22 mm=31

Artikel-Nr. Order-No.	Ident-Nr. Ident-No	mm	D 1	D 2	L	g	g
22100 L	221000170040	17	24	24	78	190	I
22100 L	221000190040	19	26	26	78	220	I
22100 L	221000210040	21	28	28	78	230	I
22100 L	221000220040	22	29,5	29,5	78	240	I



22100 L



Kraft Steckschlüssel-Einsätze

★ 12,5 (1/2")

für Außen-TX-Schrauben

Sicherungsstift: E 10 - E 24=3

Sicherungsring: E 20TX - E 24TX=3A

Impact sockets

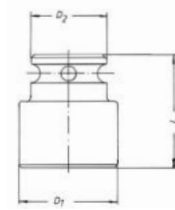
★ 12,5 (1/2")

für outside TX screws

Locking pin: E 10 - E 24=3

Locking ring: E 20TX - E 24TX=3A

Artikel-Nr. Order-No.	Ident-Nr. Ident-No	★	D 1	D 2	L	g	g
22014	220140100040	E 10	15	25	38	85	5
22014	220140120040	E 12	16	25	38	87	5
22014	220140140040	E 14	18,5	25	38	91	5
22014	220140160040	E 16	22	25	38	91	5
22014	220140180040	E 18	22	25	38	92	5
22014	220140200040	E 20	25	30	38	140	5
22014	220140240040	E 24	30	30	45	165	5



22014



Kraft-Einsätze Impact sockets



DIN 3121 – ISO 1174

Kraft Schraubendreher-Einsätze

Ø 12,5 (1/2")

für Innen-Sechskant-Schrauben

Sicherungsstift: 3

Sicherungsring: 3

Impact sockets

Ø 12,5 (1/2")

for allen head screws

Locking pin: 3

Locking ring: 3

Artikel-Nr. Order-No.	Ident-Nr. Ident-No	mm	Länge Sechskant [mm] length hexagon [mm]	L		
22802	228020050040	5	25	75	79	I
22802	228020060040	6	25	75	81	I
22802	228020080040	8	25	75	89	I
22802	228020100040	10	25	75	95	I
22802	228020120040	12	25	75	105	I
22802	228020130040	13	a.A.	75	a.A.	a.A.
22802	228020140040	14	25	75	116	I
22802	228020170040	17	25	75	133	I

22802



Kraft Schraubendreher-Einsätze

Ø 20 (3/4")

für Innen-Sechskant-Schrauben

Sicherungsstift: 5

Sicherungsring: 5

Impact sockets

Ø 20 (3/4")

for allen head screws

Locking pin: 5

Locking ring: 5

Artikel-Nr. Order-No.	Ident-Nr. Ident-No	mm	Länge Sechskant [mm] length hexagon [mm]	L		
25802	258020120040	12	44	100	359	I
25802	258020140040	14	44	100	366	I
25802	258020170040	17	44	100	378	I
25802	258020190040	19	44	100	387	I
25802	258020220040	22	44	100	411	I
25802	258020240040	24	44	100	423	I
25802	258020270040	27	44	100	462	I
25802	258023010040	30	44	100	464	I
25802	258023210040	32	44	100	509	I

25802



Kraft Schraubendreher-Einsätze

Ø 25 (1")

für Innen-Sechskant-Schrauben

Sicherungsstift: 5

Sicherungsring: 5

Impact sockets

Ø 25 (1")

for allen head screws

Locking pin: 5

Locking ring: 5

Artikel-Nr. Order-No.	Ident-Nr. Ident-No	mm	Länge Sechskant [mm] length hexagon [mm]	L		
26802	268020140040	14	54	100	580	I
26802	268020170040	17	54	100	636	I
26802	268020190040	19	54	100	640	I
26802	268020220040	22	54	100	649	I
26802	268020240040	24	54	100	678	I
26802	268020270040	27	54	100	696	I
26802	268020300040	30	54	100	807	I
26802	268023210040	32	54	100	762	I
26802	268023610040	36	a.A.	100	a.A.	a.A.

26802



Kraft Schraubendreher-Einsätze

Ø 40 (1 1/2")

für Innen-Sechskant-Schrauben

Sicherungsstift: 7

Sicherungsring: 7

Impact sockets

Ø 40 (1 1/2")

for allen head screws

Locking pin: 7

Locking ring: 7

Artikel-Nr. Order-No.	Ident-Nr. Ident-No	mm	Länge Sechskant [mm] length hexagon [mm]	L		
27802	278020190040	19	86	120	2133	I
27802	278020220040	22	86	120	2186	I
27802	278020240040	24	86	120	2176	I
27802	278020270040	27	86	120	2264	I
27802	278020300040	30	86	120	2351	I
27802	278020320040	32	86	120	2298	I
27802	278020360040	36	86	120	2515	I
27802	278024112040	41	86	120	2517	I
27802	278024612040	46	a.A.	120	a.A.	a.A.

27802




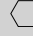


Kraft-Einsätze Impact sockets

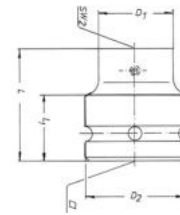
Kraft-Halter

für auswechselbare Sechskante, phosphatiert

Impact adapter

for exchangeable hexagon bits, phosphatized

Artikel-Nr. Order-No.	Ident-Nr. Ident-No			L ₁	D ₁	D ₂	L		
22809	57300	1/2"	11,2	23	22	30	38	127	I
25809	57940	3/4"	16	32	32	44	52	370	I
26809	58270	1"	22	35	44	54	70	788	I



22809 - 26809





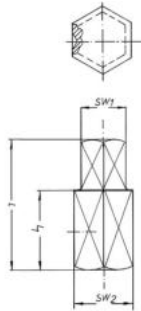
Sechskantstifte

für KRAFT-Halter, phosphatiert

Hexagon bits

for IMPACT-adapters, phosphatized

Artikel-Nr. Order-No.	Ident-Nr. Ident-No	SW ₁	SW ₂	L ₁	L		
22807-5	57301	5	11,2	17	21	17	I
22807-6	57302	6	11,2	17	22	23	I
22807-8	57303	8	11,2	17	24	23	I
22807-10	57304	10	11,2	17	25	26	I
22807-12	57305	12	11,2	17	26	34	I
22807-14	57306	14	11,2	17	27	41	I
22807-17	57307	17	11,2	17	29	55	I
25807-10	57941	10	16	20	28	60	I
25807-12	57942	12	16	20	29	66	I
25807-14	57943	14	16	20	30	76	I
25807-17	57945	17	16	20	32	92	I
25807-19	57946	19	16	20	34	106	I
25807-22	57947	22	16	20	38	128	I
25807-24	57948	24	16	20	40	144	I
26807-14	58271	14	22	25	35	114	I
26807-17	58272	17	22	25	37	130	I
26807-19	58273	19	22	25	39	142	I
26807-22	58275	22	22	25	43	160	I
26807-24	58276	24	22	25	45	174	I
26807-27	58277	27	22	25	47	206	I
26807-30	58278	30	22	25	50	225	I
26807-32	58279	32	22	25	52	250	I
26807-36	58280	36	22	25	56	296	I







22807 - 26807



Verlängerung

Extension





Artikel-Nr. Order-No.	Ident-Nr. Ident-No	Eingang Input	L				
20100	55604	1/4"	50	1	1	50	5
21100	55834	3/8"	75	2A	2A	150	5
22105	56294	1/2"	125	3	3	310	5
22116	56319	1/2"	250	3	3	375	5
25100	57929	3/4"	175	5	5	880	I
25110	57934	3/4"	250	5	5	1180	I
25115	57939	3/4"	330	5	5	1460	I
26100	58165	1"	175	6	6	1475	I
26105	58166	1"	250	6	6	2000	I
26110	58167	1"	330	6	6	2550	I
27100	58554	1 1/2"	250	7	7	6000	I
27110	58564	1 1/2"	380	7	7	8900	I
27115	58574	1 1/2"	500	7	7	11600	I
29090	59092	2 1/2"	250	8	8	10600	I
29095	59093	2 1/2"	380	8	8	16200	I
29100	59094	2 1/2"	500	8	8	28700	I
29110	59104	2 1/2"	750	8	8	41200	I

20100 - 29110



Übergangsteil

Adaptor

Artikel-Nr. Order-No.	Ident-Nr. Ident-No	Eingang Input	Ausgang Output	L				
22115	56314	1/2"	3/4"	50	3A	3A	112	I
25700-4	57914	3/4"	1/2"	55	5	5	340	I
25700-5	57924	3/4"	1"	59	5	5	400	I
26700-4	58264	1"	3/4"	70	6	6	650	I
26700-5	58269	1"	1 1/2"	110	6	6	980	I
27700-4	58619	1 1/2"	1"	110	7	7	2500	I
27700-5	58617	1 1/2"	2 1/2"	120	7	7	4600	I

22115 - 27700







Kraft-Einsätze Impact sockets

Kugelgelenk

Universal joint

22120 - 29120


Artikel-Nr. Order-No.	Ident-Nr. Ident-No	Eingang Input	L				
22120	56324	1/2"	75	3A	3A	180	I
25120	57904	3/4"	65	5	5	590	I
26120	58174	1"	100	6	6	1600	I
27120	58594	1 1/2"	175	7	7	3800	I
29120	59124	2 1/2"	145	8	8	4650	I

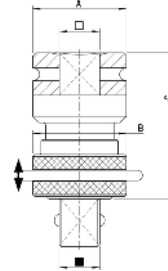


Schnellwechselfutter

quick-action chuck

54500 - 58500

Artikel-Nr. Order-No.	Ident-Nr. Ident-No	Eingang Input	Ausgang Output	A	B	C	
54500	20130	1/4"	1/4"	15	13	34	I
55500	21130	3/8"	3/8"	24	22	42	I
56500	22130	1/2"	1/2"	30	30	57,5	I
57500	25130	3/4"	3/4"	44	44	69	I
58500	26130	1"	1"	52	54	74	I





Sicherungsstift

zu KRAFT-Einsätzen

Locking pin

for IMPACT sockets

Artikel-Nr. Order-No.	Ident-Nr. Ident-No	Nr. NO	$\overline{\text{mm}}$		
	59154	1	1,5 x 10	1	5
	59164	2	2,4 x 14	1	5
	59174	2A	2,5 x 16	1	5
	59184	3	3 x 20	3	5
	59194	3A	3 x 25	3	5
	59204	4	3 x 30	3	5
	59214	5	4 x 35	3	5
	59224	6	5 x 45	4	5
	59234	7	6 x 75	5	5
	59244	8	8 x 110	7	5



Sicherungsstift



DIN 3129

zu KRAFT-Einsätzen

Locking pin

DIN 3129

for IMPACT sockets

Artikel-Nr. Order-No.	Ident-Nr. Ident-No	Nr. NO	$\overline{\text{mm}}$		
	59245	9	6 x 75	7	5
	59246	10	8 x 110	10	5
	59247	11	10 x 170	15	5
	59248	12	10 x 190	20	5





Sicherungsring

zu KRAFT-Einsätze

Locking ring

for IMPACT sockets

Artikel-Nr. Order-No.	Ident-Nr. Ident-No	Nr. NO	$\overline{\text{mm}}$		
	59257	1	9 x 2,5	1	5
	59267	2	13 x 3,5	1	5
	59277	2A	16 x 3,5	1	5
	59287	3	19 x 4	3	5
	59297	3A	24 x 4	3	5
	59307	4	28 x 4	3	5
	59317	5	30 x 5	3	5
	59327	6	45 x 7	4	5
	59337	7	75 x 10	6	5
	59347	8	114 x 10,5	8	5
	59348	9	160 x 10	9	5
	59349	9A	178 x 10	10	5



Symbol Icon	Erklärung Declaration
CI	verchromt, transparenter Griffschutz chrome plated, insulated
N	vernickelt nickel plated
PH	phosphatiert phosphatized
S	schwarz black finish
SG	stahlgrau steel grey
T	getauchter Griffschutz, Zangen schwarz PTFE beschichtet dipped handles, pliers black PTFE covered
Z	verzinkt zinc plated
NI	vernickelt, getauchter Griffschutz nickel plated, dipped handles

Symbol Icon	Erklärung Declaration
	für Aussensechskant-Schrauben for allen screws
	mit Doppel-Sechskant with double hexagon
	für Aussen-TX-Schrauben for allen TX screws
ENERGY	ENERGY-Profil s. S. 87 Energy-profile s. p. 87
	Schlüsselweite in Zoll size across flat
	Schlüsselweite in mm size in mm
	für Schlitzschrauben size in mm
	für Kreuzschlitzschrauben PH for recess head screws PH
	für Pozidriv Schrauben Pozi for pozidriv screws pozi
	für Innensechskant-Schrauben for allen head screws
	für Innensechskant-Schrauben mit Zapfen for allen head screws with pivot
	für Innen-TX-Schrauben for TX head screws interior
	für Innen-TX "S"-Schrauben for TX "S" head screws interior
	für Schrauben mit Gewinde for bolts with diameter
	für XZN Vielzahnschrauben for XZN spline head screws
	mit Vierkant with hexagon
	Eingangsvierkant female square drive
	Ausgangsvierkant male square drive
	mit Sechskant with hexagon
	Übersetzungsverhältnis gear ratio
L	Gesamtlänge in mm total length in mm
	Gewicht in g weight in g
	Verpackungseinheit packing unit
	Durchmesser in mm diameter in mm

Der Katalog wurde sorgfältig erstellt. Irrtümer und Änderungen bei Satz, Druck, Ausführungen und Abmessungen behalten wir uns vor.
Gültigkeit ab 1. 3. 2016

We did our best to make sure that all indications in this catalogue are correct. But errors cannot fully be excluded and we also have changes on version and dimensions of tools.
Validity from 1. 3. 2016



Carl Walter Produktions GmbH & Co. KG
Hahnerberger Str. 82
42349 Wuppertal
Germany

Tel.: +49 (0) 202 40924 0
Mail: info@cwalter.de
Web: www.cwalter.de