

STANDARD CLAMPING ELEMENTS



CLAMPS WITH PLASTIC CAP

No. 6310, page 20



„CROCODILE“ CLAMP WITH COUNTERHOLDER, ADJUSTABLE

No. 6312V, page 15

POWER CLAMP

No. 7600, page 6, 7



- + Low installation height
- + Clamping force up to 30 kN or 49 kN
- + Continuously adjustable

NEW!

SPACER ELEMENT FOR POWER CLAMP

No. 7600Z, page 8, 9



NEW!

BALL PRESSURE SCREW

No. 7600S, page 10

New sizes!



MOUNTING KIT

No. 7600BF, page 10

New sizes!



PRESSURE PAD

No. 7600D, page 10

New sizes!



NOT ONLY INCREDIBLE IN TERMS OF USE - OUR POWER CLAMP ALSO BOASTS AN IMPRESSIVE PRODUCT DESIGN.

Powerful and reliable in use and now also with an outstanding product design.

The AMF power clamp wins the **GERMAN DESIGN AWARD 2017** in the „Special Mention“ category. This award recognises achievements with designs that feature especially successful styling - an accolade that honours the dedication of companies and designers.

TAKE A LOOK AT OUR PRIZE WINNER!
MORE FROM PAGE 6 ...



THE POWER CLAMP THAT KEEPS ITS PROMISES

- > **Uses:** All clamping tasks in cutting and non-cutting finishing operations. There are no limits to the possible uses in tool-making, injection moulding, presses and die-cutters as well as in model- and mould-making.
- > **Characteristics:**
 - > Clamping force up to 30 kN or 49 kN
 - > Low installation height
 - > Fast and simple clamping possible
 - > Continuously adjustable

When using clamps in non-cutting and cutting metal finishing processes, as well as in mould making, clamping force and precision that meet the highest demands are required. With the sliding power clamp made of alloyed tempered steel, we offer an exceptionally robust and versatile mechanical clamping element, which can achieve extremely high clamping force of up to 49 kN. The power clamp, which is usable both horizontally and vertically, can be fastened to regular T-slot tables using T-nuts or, alternatively, to grid pallets using threaded mounting.

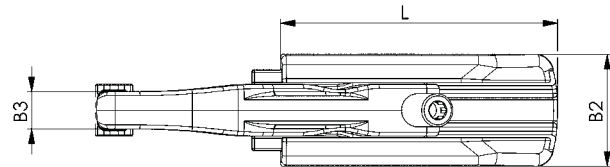
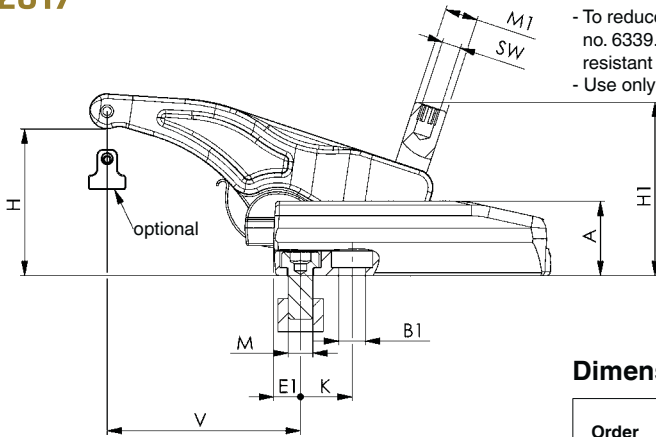
No. 7600

Power clamp, long design

Continuously adjustable clamping element made of alloyed tempered steel in forged, black galvanised design. Complete with mounting kit.

Thrust piece in smooth and ribbed variant, optionally available.

NEW!



Order no.	Size = clamping force [kN]	M	Slot	H	V	Weight [g]
553087	30	M12	14	6 - 68	13 - 110	2013
553088	30	M16	18	6 - 68	16 - 114	2045
553333	43	M16	18	5 - 80	16 - 134	3158
554198	49*	M20	22	7 - 88	19 - 165	5928

Clamping forces can deviate depending on the clamping, strength class of the clamping screw and condition of the thread (lubrication).

* Size 49 kN available from April 2017.

Application:

1. Position and fasten carrier element on the tool table.
2. The base element can be pushed into the desired position on the carrier element.
3. The height of the clamp arm can be continuously adjusted by actuating the adjusting screw, which clamps the workpiece.

Advantage:

- Low installation height
- High clamping force of 30 - 49 kN
- Height and length continuously adjustable
- The very robust design enables quick and easy clamping
- Elements easy to install
- For use in T-slots 14 - 28 mm and/or grid plates M12, M16, M20
- 2 thrust piece variants

Note:

- To reduce the wear on the adjusting screw, we recommend the use of AMF screw compound no. 6339. It possesses a synergistic combination of highly-effective solid lubricants and is heat-resistant and does not wash out.
- Use only the corresponding AMF mounting kit 7600BF.

Dimensions:

Order no.	Size = clamping force [kN]	A	B1	B2	B3	E1	H1	K	L	M1	SW
553087	30	36	13	54	18	13	85	25	135	M16	8
553088	30	36	17	54	18	16	85	28	135	M16	8
553333	43	42	17	60	20	16	105	32	155	M20	10
554198	49*	52	21	75	25	19	125	36	175	M24	12

Subject to technical alterations.





No. 7600

Power clamp, short design

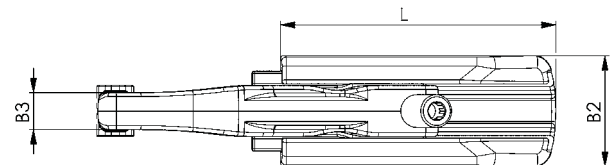
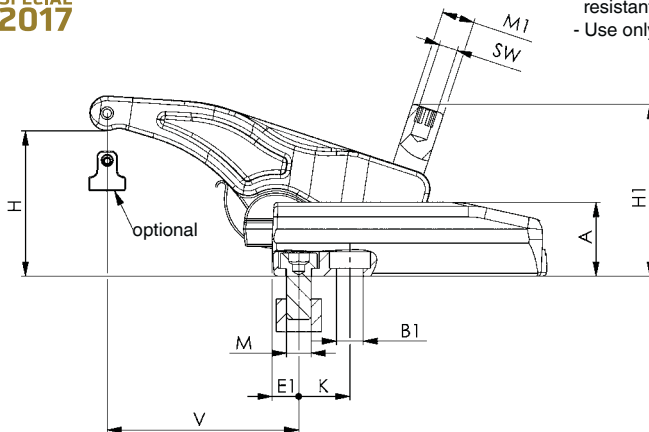
Continuously adjustable clamping element made of alloyed tempered steel in forged, black galvanised design. Complete with mounting kit.

Thrust piece in smooth and ribbed variant, optionally available.

NEW!



GERMAN DESIGN AWARD SPECIAL 2017



Recommendations



No. 7600D, page 10



No. 7600Z, page 9



No. 6339, page 95

Order no.	Size = clamping force [kN]	M	Slot	H	V	Weight [g]
554195	32	M12	14	6 - 50	12 - 82	1462
554197	40	M16	18	6 - 50	15 - 95	2262

Clamping forces can deviate depending on the clamping, strength class of the clamping screw and condition of the thread (lubrication).

Application:

1. Position and fasten carrier element on the tool table.
2. The base element can be pushed into the desired position on the carrier element.
3. The height of the clamp arm can be continuously adjusted by actuating the adjusting screw, which clamps the workpiece.

Advantage:

- Low installation height
- High clamping forces of 32 - 40 kN
- Height and length continuously adjustable
- The very robust design enables quick and easy clamping
- Elements easy to install
- For use in T-slots 14 - 24 mm and/or grid plates M12 and M16
- 2 thrust piece variants

Note:

- To reduce the wear on the adjusting screw, we recommend the use of AMF screw compound no. 6339. It possesses a synergistic combination of highly-effective solid lubricants and is heat-resistant and does not wash out.
- Use only the corresponding AMF mounting kit 7600BF.

Dimensions:

Order no.	Size = clamping force [kN]	A	B1	B2	B3	E1	H1	K	L	M1	SW
554195	32	36	13	54	18	12	78	20	95	M16	8
554197	40	42	17	60	20	15	92	26	110	M20	10

Subject to technical alterations.

No. 7600Z

Spacer element, long design

Made of alloyed tempered steel in forged, black galvanised design. Complete with mounting kit and cylinder screw.

NEW!



GERMAN
DESIGN
AWARD
SPECIAL
2017



Order no.	Size = clamping force [kN]	Slot	M	A	Weight [g]
554821	30	14	M12	60	2297
554824	43	18	M16	70	3344
554825	49*	22	M20	80	5286

Clamping forces can deviate depending on the clamping, strength class of the clamping screw and condition of the thread (lubrication).

* Size 49 kN available from April 2017.

Application:

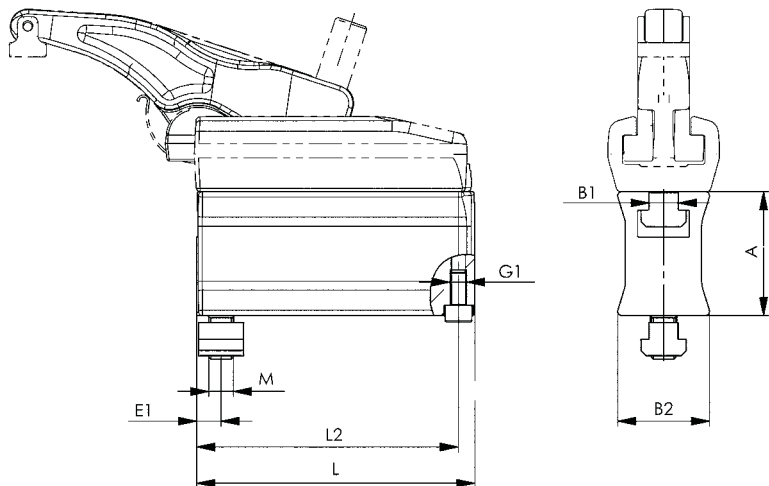
The spacer element is positioned on the tool table with the corresponding mounting kit 7600BF. The carrier element of the power clamp is then mounted on the intermediate element, likewise by means of mounting kit 7600BF. Adjust the height of the clamp arm with the adjusting screw and clamp the workpiece.

Advantage:

- Additional clamping heights can be achieved by installing multiple spacer elements
- Continuous transition between the clamping heights
- High clamping forces of 30 - 49 kN
- For use in T-slots 14 - 28 mm and/or grid plates M12, M16, M20

Note:

Use only the corresponding AMF mounting kit 7600BF.



Dimensions:

Order no.	Size = clamping force [kN]	B1	B2	E1	G1	L	L2
554821	30	14	45	12	M8	135	127
554824	43	18	48	16	M12	155	145
554825	49*	22	58	19	M12	175	165

Recommendations



No. 7600,
page 6



No. 6339,
page 95

Subject to technical alterations.

No. 7600Z

Spacer element, short design

Made of alloyed tempered steel in forged, black galvanised design. Complete with mounting kit and cylinder screw.

NEW!



GERMAN
DESIGN
AWARD
SPECIAL
2017



Order no.	Size = clamping force [kN]	Slot	M	A	Weight [g]
554822	32	14	M12	60	1572
554823	40	18	M16	70	2290

Clamping forces can deviate depending on the clamping, strength class of the clamping screw and condition of the thread (lubrication).

Application:

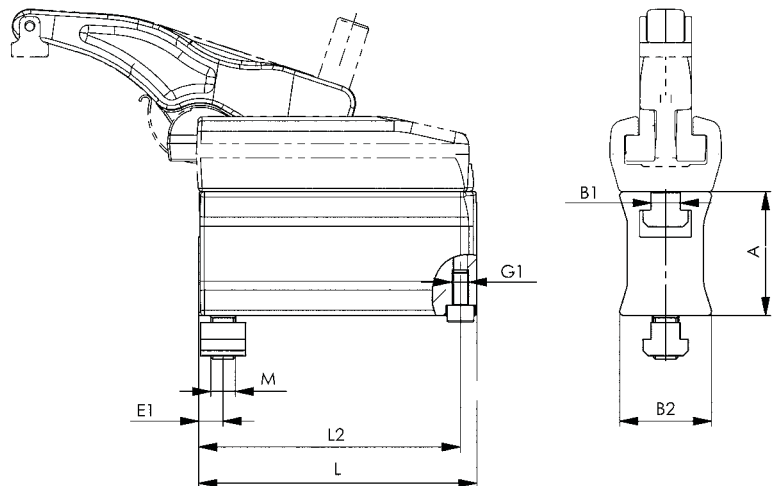
The spacer element is positioned on the tool table with the corresponding mounting kit 7600BF. The carrier element of the power clamp is then mounted on the intermediate element, likewise by means of mounting kit 7600BF. Adjust the height of the clamp arm with the adjusting screw and clamp the workpiece.

Advantage:

- Additional clamping heights can be achieved by installing multiple spacer elements
- Continuous transition between the clamping heights
- High clamping force of 30 - 49 kN
- For use in T-slots 14-24 mm or grid plates M12 and M16

Note:

Use only the corresponding AMF mounting kit 7600BF.



Dimensions:

Order no.	Size = clamping force [kN]	B1	B2	E1	G1	L	L2
554822	32	14	44,5	12	M8	95	88
554823	40	18	47,5	16	M12	110	100

Recommendations



No. 7600,
page 7



No. 6339,
page 95

No. 7600S

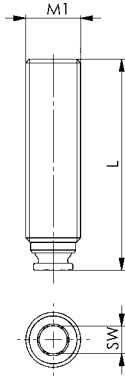
Ball pressure screw

Tempered steel, burnished.



NEW!
NEW!
NEW!

Order no.	Size = clamping force [kN]	M1	L	SW	Weight [g]
553353	30	M16	62	8	80
554214	32	M16	55	8	70
554215	40	M20	65	10	128
553441	43	M20	78	10	165
554216	49	M24	93	12	275



No. 7600D

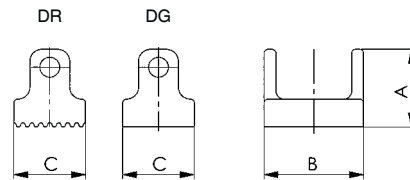
Pressure pad

Complete with dowel pin.
Stainless steel.



NEW!
NEW!

Order no.	Size = clamping force [kN]	Form	A	B	C	Weight [g]
553351	30	DG	19,5	25	18	28
553352	30	DR	19,5	25	18	27
553442	43	DG	24,0	30	20	47
553443	43	DR	24,0	30	20	48
554301	49	DG	28	36	25	75
554302	49	DR	28	36	25	78



Recommendations



ISO 2936C

No. 6339, page 95

No. 7600BF

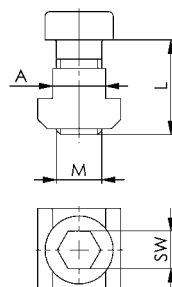
Mounting kit

Comprising cylinder screw DIN 6912, strength grade 12.9 and T-groove key DIN 508.



NEW!
NEW!
NEW!

Order no.	Size = clamping force [kN]	A	M	L	SW	Weight [g]
553335	30 / 32	14	M12	25	10	67
553338	30 / 32	16	M12	30	10	86
553339	30 / 32	18	M12	30	10	118
553340	30	18	M16	30	14	141
553342	30	20	M16	35	14	188
553343	30 / 43	22	M16	40	14	262
553344	30	24	M16	40	14	346
553446	40 / 43	18	M16	35	14	148
553447	40 / 43	20	M16	40	14	196
553448	40 / 43	24	M16	45	14	354
554298	49	22	M20	40	17	298
554299	49	24	M20	45	17	394
554300	49	28	M20	45	17	505



Subject to technical alterations.